



County of



Glamorgan

Garden Party

given by

The Chairman of the Glamorgan County Council

County Alderman P. J. Smith,

M.B.E., J.P., D.L., M.R.S.H.

at

Dyffryn,

St. Nicholas,

Near Cardiff

Thursday, 7th July, 1960



[DYFFRYN HOUSE



THE LAVENDER COURT

LIGHT REFRESHMENTS will be served throughout the afternoon.

•

3.15 p.m. **DISPLAYS**

Demonstration of physical education by pupils of Rhiwbeina and Eglwys Wen Infants' School.

Demonstration of agility work by pupils of Heol-gam Secondary School, Bridgend.

•

4.15 p.m. TEA will be served.

•

5.15 p.m. The Band and Drums of the 6th (Glamorgan) Battalion The Welch Regiment, (T.A.), will Beat Retreat.

•

During the afternoon music will be played by

The BAND OF THE 6th (Glamorgan) BATTALION THE WELCH REGIMENT, (T.A.), by kind permission of the Commanding Officer,

Lt.-Col. E. G. KIERNAN.

Conductor : Bandmaster E. DAVID.

HISTORY OF DYFFRYN HOUSE AND GARDENS

THE present Dyffryn House was built by Mr. John Cory in 1893 on the site of the former building owned for many centuries by the Bruce Pryce and Button families. The site is the centre of an area whose historic associations date back to the pre-Christian era. Within a short distance of these grounds there are prehistoric burial chambers at St. Lythans and Tinkinswood which date from *circa* 2,000 B.C. The work of laying out the gardens commenced about 1900 under the supervision of Mr. Reginald Cory, who was a Vice-President of the Royal Horticultural Society. After Mr. Reginald Cory's death in 1934 the development of the gardens ceased and eventually the Dyffryn Estate was purchased by Colonel Cennydd G. Traherne, T.D., the present Lord Lieutenant of Glamorgan who, in 1939, handed over Dyffryn House and Gardens to the Glamorgan County Council.

Since 1948 Dyffryn House has been used by the Glamorgan Education Authority as a residential education centre. Weekly training courses concerned with a wide variety of educational subjects are conducted throughout the year and their influence upon the work of the schools and educational institutions in the county has grown continuously. Courses are also arranged for VIth form pupils of the grammar schools and senior members of youth organisations.

The County Council has made considerable progress with the development of Dyffryn Gardens which extend over 80 acres and are designed to embrace a variety of garden styles in an integrated whole. They are furnished with a rich variety of trees and shrubs, many of them being rare specimens from distant parts of the world. Every effort is being made to complete the landscape design of the gardens so that their contents may be labelled and catalogued for the benefit of interested visitors. At present increasing numbers of people who enjoy natural beauty or are interested in horticulture or botany, visit the gardens either as individuals or in organised parties.



THE BAND AND CORPS OF DRUMS
OF
6TH (GLAM.) BN. THE WELCH REGIMENT (T.A.)



THE BEATING OF RETREAT

THE BEATING OF RETREAT is one of the oldest and most significant ceremonies in the British Army. It is a ceremony whose origins are common to most armies of Western Civilisations and derives its name from the act of retreating or retiring into a closed garrison for the night. The passing of centuries has transformed it from a functional to an historical and traditional pageant.

INTRODUCTION

Quick March : "Standard of St. George" Band and Drums
Martial Music typical of the vital spirit of the Army in general, introduces the theme.

DIVISION

Quick March : "Aldershot" Drums and Bugles
In this item the spirit of the old and the new appears. The Drums represent the first form of military music, while the Band symbolises a later age and the development and extension of the British Army.

ASSEMBLY

Fanfares Bugles and Band
The Middy Band and Drums

SLOW AND QUICK MARCH

"Scipio" Band and Drums
"Georgia" Band and Drums

The long day ends and the Camp settles down for the night. The spirit of the Regiment lives on. Stories of the past are conjured up and allied to the realities of our own times.

RETREAT

Sunset and Sounding of Retreat Bugles
The Retreat is the recalling of the patrols for the night, which was done at sunset by drums and bugles.

HYMN

"Abide with Me"

With the playing of the well-known hymn, the echo of the past merges into a prayer for the present and an expression of trust in the Almighty for the future. The traditions and glory of the Regiment remain while it moves on to share in the destiny of the Army, the Empire and the World.

FINALE

"Mae hen wlad fy Nhadau" }
"God Save the Queen" } Band and Drums
"Men of Harlech" }
"Ap Shenkin" }

An essentially Welsh march. The Welsh National Anthem emphasises the Regiment's close association with Wales and its pride in the connection.

HISTORICAL NOTES

6 (Glamorgan) Bn. The Welch Regiment was first raised as the 2 Glamorgan Volunteer Battalion in 1858 and became 6th Bn. The Welch Regiment in 1908. It served with distinction in France from 1914-1918, being one of the first Territorial Units to go overseas. Between the two World Wars it built for itself a great reputation but in 1938, due to the changes in the order of battle of the British Army it was converted to an Artillery roll, in which it remained until 1954 when it was temporarily disbanded.

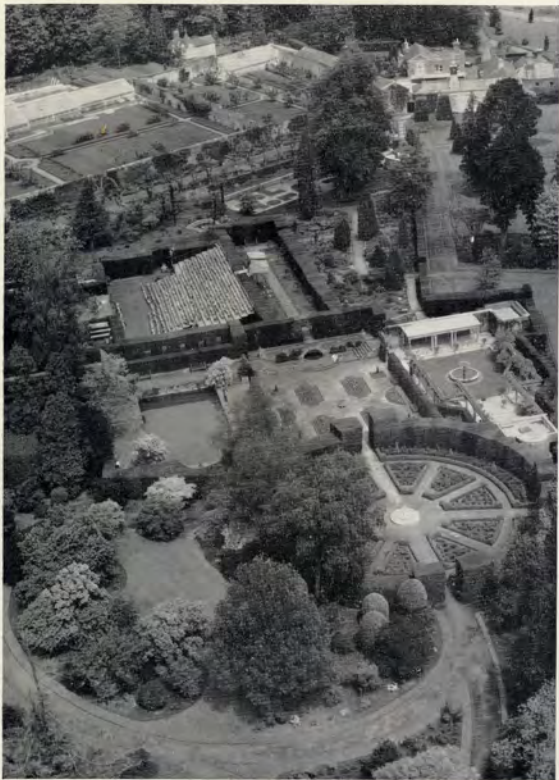
On 1st October, 1956, 6 (Glamorgan) Bn. The Welch Regiment was re-formed and has again taken up a prominent place among Territorial Units in the County.

* * *

The Regimental Colour will be on parade for this occasion. Colours were originally used as a rallying point for a Regiment in battle but have now become the symbol of the spirit of the Regiment and a memorial to the deeds of the those who have gone before us.

INSTRUCTION TO SPECTATORS

Spectators are requested to rise (Officers in uniform saluting—male civilians removing head-dress) when —
Retreat is sounded
The National Anthems are played
and
The Colours are marched off parade.



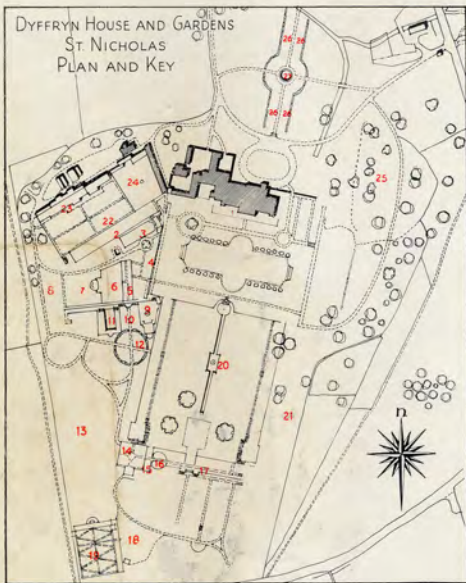
DYFFRYN GARDENS FROM THE AIR



AERIAL VIEW OF DYFFRYN HOUSE AND GARDENS—SOUTHERN ASPECT



THE PALM HOUSE



- 1—Front Terrace
- 2—Italian Terrace
- 3—Sunk Garden
- 4—Dutch Garden
- 5—Yew Walk
- 6—Open Air Theatre or Cloisters
- 7—Upper Cloisters
- 8—Herbaceous Border
- 9—Fountain Court

KEY

- 10—Paved Court
- 11—Swimming Pool
- 12—Topiary Garden
- 13—West Garden
- 14—Formal Garden
- 15—Stock Garden
- 16—Heart Garden
- 17—South Terrace
- 18—Rose Garden
- 19—Dahlia Garden
- 20—Lily Canal
- 21—Arboretum
- 22—Fruit Garden
- 23—Glasshouses
- 24—Kitchen Garden
- 25—Rockery
- 26—Rose Borders
- 27—Lily Pond

PRINTED BY
W. WHITTINGTON LTD.
NEATH, GLAM.