

The Hall and Stairs

8. THE NEW CHAPEL

Can be seen by visitors. Mass is celebrated on Sunday mornings and the Chapel is part of the Parish of Llantrisant and Llanharan. Note the brass bell outside Chapel.

9. **THE WELSH SHOP** is open with the house and visitors will see this on entering and leaving the house. It is open at other times as advertised and always by appointment. The shop has a range of Welsh Craft products.
(Telephone 0443 226253)

NOTE TO OUR VISITORS

Llanharan House is opening to the public on a regular basis for the first time in July, 1982.

We all hope you will enjoy your visit to the house and grounds. Each historic house is surely unique in its own way. This house, in the heart of South Wales, is still being used as a family home. You will see our family pictures, furniture and china which have been acquired over several hundred years.

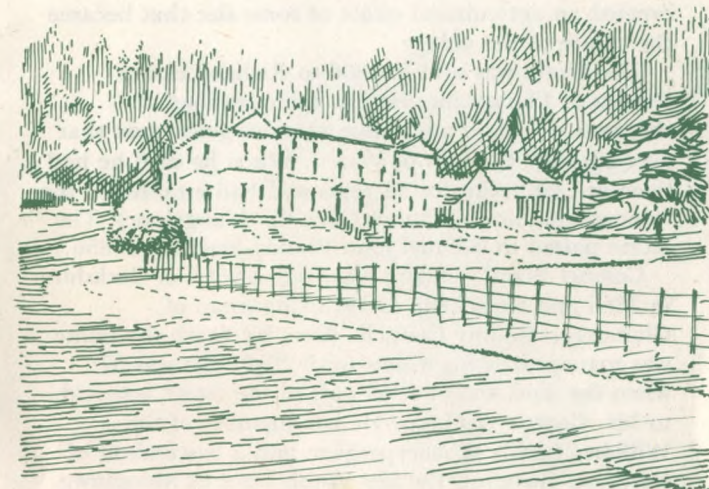
If you are a visitor to South Wales I hope you will enjoy your visit to Mid Glamorgan's only historic house regularly open to the public. To those of you who live in Wales we also extend our welcome and thank you for coming to the house. Without your support the future of houses like this cannot be assured.

Owain Williams

Times of opening:

From 1st May to 30th September
Sunday and Wednesday 2.00-5.30 p.m.
Saturday 12.00-5.30 p.m.

Shop open independently as advertised. Always with house at Christmas, and other holidays and by special appointment.



LLANHARAN HOUSE

Llanharan
Mid Glamorgan
Telephone: 0443 226253

HISTORICAL NOTES

There is little evidence that there was a house here before 1670. The Powell family came to Llanharan from Maesteg in 1700. The present Georgian part of Llanharan House was built by 1756. The Powells created an agricultural estate of some size that became the centre of the village.

The Estate was sold in 1806 to Richard Hoare Jenkins of Llangeinor. He has been described as '... the most thorough and unostentatious gentleman that ever adorned the hills of Wales'. When he died he had lived in Llanharan for 52 years and had established the famous Llanharan Hounds (now the Llangeinor). The estate passed to Colonel John Blandy-Jenkins in 1856.

Colonel Blandy-Jenkins was High Sheriff of Berkshire in 1866 and from 1895 to 1915 Chairman of Glamorgan County Council. After his death the estate was managed by his widow until 1953. She was 87 when she died and in 1954 part of the estate was sold to Mr. George Williams. He is a member of the Williams family of Aberpergwm and a descendant of Iestyn ap Gwrgant, the last Welsh Lord of Morganwg. The family have been at Aberpergwm since Wiliam ap Jenkin went there in the sixteenth century. He was High Sheriff of Glamorgan in 1566, an office Mr. George Williams held four centuries later. Mr. Williams's grand father, Morgan Stuart Williams, also owned St. Donat's Castle which he purchased in 1901. He did much to restore the house, now the Atlantic College.

Llanharan House is now owned by Mr. George Williams's son, Owain. Although his parents are very frequently at Llanharan House, they have a house in Powys.

THE SETTING OF THE HOUSE

The house is well sited at the foot of a sheltering ridge. The parkland setting together with many other features is typical of eighteenth-century landscape design. An example of this is the 'haha' which was designed to keep grazing stock away from the house whilst creating an illusion of uninterrupted parkland views.

The central three-storey part of the house is Georgian (1756), and is a fine example of Chaste, restrained eighteenth-century taste. The two wings were added in Victorian times and in 1910 by the Blandy



The Stable Block

Jenkin's family. The whole front is faced with ashlar stone which adds to its crispness and good proportions.

The stable block is stone-built dating from the late seventeenth century and is possibly the site of the original *Ty Mawr* (Big House). Note the classical details such as the sundial on the front gable, the old clock and the bell-cote on the block behind.

The Old Coach House is now used by Llanharan Woodlands as a workshop for Garden Furniture manufactured from timber grown in our forestry plantations here. In the near future it is hoped to start other craft workshops and to use the extensive out-buildings to the full.

BRIEF INTERIOR TOUR

Visitors to the house will be given a guided tour and will be shown as much of the house as it is practical to view.

1. THE HALL AND STAIRS

Family portraits to right of front door and underneath spiral stone stairs. The spiral staircase rises up the full three floors of the house. It has no actual supports, the stairs are cantilevered from the wall. It is worth the visitors looking up from the marble table in the hall to the dome.

2. SMALL DRAWING ROOM

To right of front door. Contains family paintings, a portrait of 2nd Duke of Bedford and a rather charming portrait of Reginald, Josephine and Marie Louise Herbert (of Clytha, the great-great-Uncle and Aunts of the present owner). There is a George Smith landscape. The eighteenth-century bookcase contains plates showing views of Aberpergwm.

3. THE DINING ROOM

Portraits of Wiliam ap Jenkin (1548-1629) whose son settled at Aberpergwm. Other period furniture. Portrait of Elspeth Rhys Williams by Donald Anderson, a pupil of Pietro Annigoni.

4. BACK HALL

Large oil painting of unknown country house and formal garden. Eighteenth-century Grandfather Clock. Early copies of Hans Holbein drawings. The sixteenth-century originals are to be seen in the Royal Collection at Windsor.

5. THE DRAWING ROOM

The first floor room has fine proportions with rich plaster ceiling and moulded cornice. The room is a good example of classical design. It dates from 1910. Period furniture includes eighteenth-century mahogany bureau bookcase (shows some family China). Note gilded mirrors (c.1760) on either side of Ionic columns. Watercolour of Courtyard at St. Donat's Castle.

6. THE LIBRARY

Two large wooden bookcases containing a range of works. Nineteenth-century painting of Tintern Abbey by Henry Harris over fireplace. Collection of Paul Sandby prints of Welsh Castles.

7. THE OLD DINING ROOM

Built as a dining room in the 1910 additions, this room has been an unconsecrated Roman Catholic Chapel until June 1982 (since mid 1960s). The room is now used for teas and light refreshments by visitors and can be booked for private dinner parties and reception throughout the year. Also exhibitions.