



69th WELSH NATIONAL GYMANFA GANU Ottawa 2000-Aug 31ST to Sept 3RD

[Redacted], Orleans, Ontario, Canada K1E 3W4
Phone/Fax [Redacted] E-mail [Redacted]

Dear Friends/Annwyl Gyfeillion:

The Ottawa Welsh Society invites you to attend and participate in the 69th Welsh National Gymanfa Ganu in Ottawa, Canada August 31 to Sept. 3, 2000.

As the Capital City of Canada we are looking forward to welcoming all of our guests from around the world to the largest Welsh cultural event in North America. Let's all start the new millennium off with the sound of music. This flyer contains all the basic information regarding the events we have planned. We ask that you return the registration form as soon as possible with your payment to the address on the form.

Deuwch Canwn I'r Arglwydd (Come, Let Us Sing To The Lord) in Canada's beautiful capital city.

Ottawa 2000 Gymanfa Ganu
Venue Committee

Special Contributions Sought

Due to the large expense involved with holding a National Gymanfa Ganu, the Ottawa 2000 Gymanfa Ganu venue committee invites extra contributions in any amount. The persons making such extra contributions by July 15th will be recognized in the official program booklet if they wish.

In one section, persons contributing funds as a memorial or as an honoring gift will be identified after the person's name. In another section, contributors will be recognized according to the following classifications: Patron/Corporate Sponsor \$500.00 or more; Contributor \$100-\$499; Donor \$50-\$99; Sponsor \$25-\$49; Friend \$10-\$24. Thank you for your consideration.

Y Rhaglen/The Schedule

Thursday, August 31

- 8:30 am Tour Desk Opens
- 10:00 am WNGGA Registration Opens
- 12:00 pm Marketplace Opens
- 2:00 pm Official Opening Ceremony
- 7:00 pm Noson Lawen
- 9:30 pm Informal Singing

Friday, September 1

- 8:00 am WNGGA Registration Opens
- 8:30 am Tour Desk Opens
- 9:00 am Marketplace Opens
- 9:00 am WNGGA Board of Trustees Meeting
- 9:30 am Seminars
- 11:00 am Seminars
- 1:00 pm Eisteddfod, Solo and Instrumental
- 1:30 pm Seminars
- 3:00 pm Seminars
- 6:00 pm Social Hour
- 7:00 pm Grand Banquet
- 10:00 pm Informal Singing

Saturday, September 2

- 8:00 am WNGGA Registration Opens
- 8:30 am Tour Desk Opens
- 9:00 am Marketplace Opens
- 9:00 am WNGGA Annual General Meeting
- 11:00 am Seminars
- 11:00 am Awr Y Plant
- 1:00 pm Eisteddfod, Choral and Family
- 1:30 pm Seminars
- 3:00 pm Seminars
- 6:30 pm Social Hour
- 7:30 pm Grand Concert
- 10:00 pm Informal Singing

Sunday, September 3

- 7:30 am WNGGA Board of Trustees Meeting
- 10:30 am Bilingual Worship Service
- 2:30 pm Afternoon Gymanfa Ganu Session
- 5:00 pm Inter-session Meal
- 7:00 pm Evening Gymanfa Ganu Session
- 9:30 pm Te Bach and Farewell

Aug. 30 -
Sept. 4 -
[84.00]

Croeso i Ottawa/Welcome to Ottawa

Ottawa last hosted the North American Gymanfa Ganu in 1977. In 2000, the Ottawa Welsh Society are ready to again welcome all of our friends from around North America and the World to one of the worlds' most beautiful capital cities. We hope to make August 31 to Sept. 3, 2000 a weekend for all to remember.

This registration flyer provides a brief summary of the many activities and plans that are underway. You are invited to attend and to share this information with friends and relatives. We look forward to welcoming everyone to Ottawa for the first Gymanfa Ganu of the new millennium.

For our American guests please remember that when we quote prices in Canadian Dollars they may seem high but remember \$1.00 Canadian is worth less than 70 cents American.

The Venue

All of our events will be held at the Ottawa Congress Centre. The centre is a modern flexible facility of over 84,000 square feet that can be configured to accommodate everything from meetings for 20 people to dinners for 2,000 people and conventions for up to 5,000 delegates. The centre is located adjacent to the Westin Hotel and is connected by a covered walkway, and is across the street from the Novotel Hotel. The centre is also attached to The Rideau Centre, which is one of our main shopping centres that contains over 200 shops and services and is a shoppers paradise. Since all activities are being held under one roof there will be no need for shuttle buses.

Hotels

Our two main hotels are the Westin Ottawa Hotel, [redacted] Colonel By Dr., Ottawa, Ontario (phone 613-[redacted] or [redacted]) and the Novotel Ottawa Hotel, [redacted] St., Ottawa, Ontario (phone [redacted]). Rates are as follows; at the Westin \$125.00 CAD (that's about \$87.00 US) if booked before Feb. 27 2000 and increases to \$138.00 CAD after that date, so book early. This is a great bargain for one of the best hotels in the country. The Novotel rate is \$115.00 CAD (that's about \$80.00 USD) per night. Please

remember to quote Welsh National Gymanfa Ganu to get these special rates.

Other nearby hotels include Les Suites Hotel Ottawa, [redacted] Messerer St., Ottawa located next to the Novotel. It is an all suite hotel which would be great for families (phone number [redacted] 1-800-207-1989 or [redacted] 00.) The Chateau Laurier Hotel, 1 Rideau St., Ottawa (phone [redacted] 414 or 1-800-[redacted]) is the grandest hotel in Ottawa and is located across the street from the Westin. Other hotels within walking distance of the Ottawa Congress Centre include, The Lord Elgin Hotel, [redacted] Elgin St. Ottawa, Ont., phone number [redacted] 5555) or toll free [redacted] 267-4298.) The Ramada Hotel & Suites, 111 Cooper St. Ottawa, Ont., phone number [redacted] 331 or toll free [redacted] 267-2670.

Arriving by Car

Persons who will be driving to Ottawa can do so by modern four lane highways. If you would like to get driving directions please check off the box on your registration sheet enclosed with this package. Each of the Hotels have parking facilities which are accessed from the front reception area of each hotel.

Arriving by Air

Ottawa International Airport is located approx. 20 minutes south of Downtown Ottawa. It is a large modern airport with all the services you would expect from a major airport. You have many options available to you when travelling to the hotels. There is a hotel shuttle bus that services all of the host hotels, taxis are always available (approx. \$20.00 CAD one way) and for the budget minded you can take the local public bus system. Also all major car rental agencies are located at the airport.

Official Airlines

We have arranged special discounts from 2 airlines for our event, Air Canada and US Airways. Both offer flights to Ottawa from many US and Canadian cities.

With Air Canada our special event number is CV008018 and with US Airways our Gold File number is 32131295. Please be sure to quote these numbers to your travel agent or the airline

3613-901

reservations centres (Air Canada toll free [REDACTED] 268-0024 or US Airways Toll Free [REDACTED] 7687) and ensure that they are on the file or you will not get the proper discount. If you would like assistance in booking your flights you can call Admiral Travel Agency in Ottawa at toll free 1-[REDACTED] and ask for Kathy Morris. As our travel agent she will make sure that you receive all of the proper discounts.

Tours

The venue committee has contracted with Capital Trolley and Tour Company to provide the tours during the weekend. They have been providing tours and trolley service in the Ottawa region for over 10 years and have an excellent reputation. Please see the enclosed sheet that lists all of the tours that are available. There are so many sites to see in Ottawa you may wish to stay a few days longer to see all of the exciting museums and all of the other incredible sites in the area.

Opening Ceremony

Featuring the Bangor Area Senior High School Slater Band in their Welsh Guards Uniforms. They will march from the Ottawa Congress Centre to Parliament Hill and perform in front of the Parliament Buildings. This will be a spectacular beginning to our exciting weekend of Welsh culture and music.

Official Hymnal

Welsh and English Hymns and Anthems (Reformatted) will be the official hymnal for the 2000 Ottawa National Gymanfa Ganu. It will be used throughout the weekend. It is available in two sizes, a regular sized 6x9 inches or enlarged 8.5 x 11 inches for conductors and people who are sight challenged. They are available from the WNGGA national office and will be for sale during the event.

Marketplace

We will be having a marketplace again to be held at the Ottawa Congress Centre. Vendors will be present with a variety of Welsh goods that will be offered for sale. Welsh jewellery, music, books and many other items will be available. Any potential vendors that would like to take part can contact Myfanwy Davies at [REDACTED]

Informal Singing

As always we will be having informal singing following the more formal events on Thursday, Friday and Saturday evenings. This is a great way to warm up for Sunday and meet all of your old friends and also make some new ones.

Annual General Meeting

At 9:00 am on Saturday the WNGGA will hold its Annual General Meeting of members. Presided over by the International President, Col. Alfred J. Reese Jr. the membership will receive reports on the state of the Association, elect trustees from Canada and the United States, and conduct such other items of official business as come before the body. Admission is restricted to Life and Annual members of WNGGA.

Noson Lawen

Be sure to be on hand for the first major event of the Gymanfa Ganu on Thursday evening starting at 7:30 pm. We will be hosting a Noson Lawen. This promises to be an exciting evening of entertainment featuring some of our outstanding local talent along with acts from throughout North America and indeed the world. This will be a fun and interesting way to get the weekend started.

The 2000 National Eisteddfod

The 2000 Eisteddfod will consist of competition in 4 musical categories and 2 literary categories. Musical categories will include Solo Voice, Solo Instrumental, Choral, and Family Ensemble. Full details are included on the Eisteddfod entry form included with this package.

Awr Y Plant

The children's hour will allow children 12 and under to show off their talents in a noncompetitive environment. Any type of musical, dramatic or literary talent is welcome and encouraged to take part. Anyone wishing to take part can contact Alison Lawson at our mailing address or phone number [REDACTED] 704. There is no cost to participate or attend this event.

Grand Banquet

The highlight of the Friday events will be the Grand Banquet. It will be held in the main Congress Hall at the Ottawa Congress Centre with cash bar reception at 6:00 and the banquet starting at 7:00 pm. World famous Executive Chef Michael Ois is preparing a Welsh Feast that you will remember for a long time. You will be happy to know that the hall chosen has room for 1000 guests, therefore there will be plenty of room for everyone who would like to attend. The menu will consist of Spinach, Mushroom, Radicchio, and Feta Cheese Salad with Balsamic Vinaigrette, Leek and Potato Soup, Roast Rack of Spring Lamb with Red Currant & Oregano Sauce, Braised Parisienne Potatoes with Thyme, Whole Green Beans with Caramelized Pearl Onions, Mini Fruit Flan along with Assorted Rolls and Butter, Coffee and Tea. A comprehensive wine list of many fine wines from around the world will be available. A vegetarian alternative will be available, please note this on your registration form. Our guest speaker for the banquet will be Lord Parry of Neyland who is a wonderful speaker and will keep us all entertained. We are also very happy to announce that the special musical guest for the banquet is Harpist and mezzo-soprano Rachael Ann Morgan. One of the finest harpists in the world Ms. Morgan will dazzle you with her beautiful voice and world class musical talent. Her appearance alone is worth the cost of the banquet. Cost for the banquet is \$45.00 CAD or \$34.00 USD per person.

The Grand Concert/Y Gyngerdd Fawr Côr Meibion De Cymru/The South Wales Male Voice Choir

We are proud to be presenting to you at the 2000 Grand Concert the largest male voice choir in Wales today. They have toured the world extensively and have proudly represented Wales at many important international events. Along with the choir there will be three of the best young sopranos in Canada. They also happen to all be of Welsh heritage. Gwyneth Hughes-Penman, Shannon Mercer and Sandra Stringer will entertain you with their beautiful voices as soloists and along with the choir in some special pieces of music. We promise you that the finale

of the concert will be something you will never forget. The special compere for the concert will be the famous John Morgan. For those of you who can remember the last Gymanfa Ganu in Ottawa you will know that Mr. Morgan was the compere for the Grand Concert that year also. Since that time his career has continued to take off and his CBC radio and now television series "The Royal Canadian Air Farce" has won him many awards and a dedicated audience across North America. The concert will be held in the Main Congress Hall of the Congress Centre and has a capacity of 3500 people for the concert. Tickets will be sold to the general public but WNGGA attendees will be provided with priority seating. Cost will be \$30.00 CAD or \$23.00 USD for adults and \$20.00 CAD or \$15.00 USD for children and full time students.

Bilingual Worship Service

The Sunday morning worship service at 10:30 am will be presided over by the Right Reverend J. Ivor Rees, the former bishop of St. David's. The service will be held in the main congress hall at the Ottawa Congress Centre. During the church service WNGGA members who have passed away since the last National will be honoured. As the name and hometown of the deceased member is read, a rose will be placed into one of two special large glass memorial vases. Names of deceased members should be send to the WNGGA International headquarters for inclusion on the list.

The Sunday Gymanfa Ganu

The highlight of the weekend will be the two Gymanfa Ganu sessions. The sessions will be held in the Main Congress Hall of the Ottawa Congress Centre.

The conductor for both sessions will be Mr. Roy Morris. Born in Swansea, Roy was educated at Ystalyfera Grammar School and Mill Hill Public School, London. As a young boy he was active in musical productions and local Eisteddfodau. He began conducting at the age of 13 with a school choir. He studied piano under John Edwards, Pontardawe; Derek Johnstone at Mill Hill; and at the Royal Academy of Music. Roy studied organ under Ivor Owen, Gymanfa Ganu Conductor and Municipal Director of Music for Swansea. After moving to Canada he held several posts as

organist and choir director and was the founding director of the Ottawa Welsh Choral Society and director of the Concordia German Male and Female choirs. He has conducted many cymanfaoedd across North America and has earned a reputation as an excellent conductor. The organist for both sessions will be Mr. Alan Thomas of Ottawa. Originally from Neath, Alan was educated at Manchester and Reading Universities. For a time he was on staff with the National Youth Orchestra of Wales. Upon coming to Canada he was the Director of Music at Ashbury College from 1974-1984 and is the organist and choir director at Westminster Presbyterian Church in Ottawa. He is also in high demand as a private piano and organ instructor.

The venue committee has set a modified registration fee of \$7.50 Canadian for persons wishing to attend only the Sunday afternoon and evening sessions. This is meant to encourage friends and visitors who may wish to be a part of these special sessions only.

Inter-Session Sunday Meal

We have arranged for a meal to be provided right at the Ottawa Congress Centre between the 2 Gymanfa sessions. The meal will consist of a pasta buffet with Vegetable Fusillette, Fettuccine, and Penne Pasta with your choice of Basil & Tomato, Meat and Alfredo Sauces along with Caesar Salad, Rolls and Butter, Coffee & Tea and Assorted Pies for dessert. Cost will be \$20.00 Cdn or \$15.00 USD and we guarantee plenty of food for everybody. Tickets will be limited to the first 700 people.

Seminars/Y Seminarau

We have arranged a selection of many seminars and are sure you will find several that will interest you. Tickets will be needed for each seminar and will cost \$11.00 Cdn or \$8.25 USD each. As you will notice we are providing most seminars twice to allow people a chance to attend as many as they wish without having conflicts.

Friday Morning 9:30-10:30

FR11 The Folktale Tradition in Wales by storyteller Beth Phillips Brown. Participants will enjoy a hands-on interactive approach to learning

about Welsh folk stories from the Mabinogion and the wealth of Gypsy stories which have developed in Wales, some well-known and loved and others new to listeners ears ranging from Jack the Romany tales to King Arthur, from Daniel Pant to Llyn y Fan Fach.

FR12 The Celt and the Cymro: Welsh National Identity and the Celtic Imagination. Dr John Ellis, from the Welsh Heritage Program at Green Mountain College, Vermont will explore the relationship between the image of the Celt and Welshness. After a brief account of ancient Celtic society and history, he will focus on how the idea of the Celt has been used in modern times to articulate Welsh national identity. Dr Ellis will discuss the idea of druidism in Welsh culture, the Victorian racial ideology of "Celtic" character and the use of Celtic imagery in Welsh nationalism. This seminar will focus on how the idea of the Celt has been used in modern times to articulate Welsh national identity.

FR13 Welsh Culture in Patagonia Today Dr Paul Birt will be talking about how Welsh culture and language has survived in the two main centres of Welsh settlement in Chubut Province, Argentina and how in the past few years there has been a remarkable upsurge in interest in all things Welsh in these areas. With the aid of slides and recordings from Gaiman and Trelew in eastern Patagonia and Cwm Hyfryd at the foot of the Andes, the seminar will give a succinct view of Welsh life in modern Patagonia.

FR14 The Life and Career of Peter Warlock. Dr. Rhian Davies, an expert on the life of Morfydd Owen, will be coming from Wales to speak about the music, life and career of Peter Warlock who was of Welsh and Canadian background. Rhian has recently completed a TV documentary on the composer and is working on a book about Warlock which will be published in the Fall.

Fr15 Singing the World Alive: the Voice of Welsh Poetry in the 21st Century. The award winning Welsh writer Menna Elfyn, the author of seven volumes of poetry, stage plays and novels will draw from her experiences as a nomadic poet who has trampled the swamps of Vietnam and the sierras of Mexico. She will read from her work as well as show her poetry on film and video.

Friday Morning 11:00-12:00

Fr21 Finding Your Welsh Ancestor in North America Annie Lloyd will be familiar to readers of the Welsh-American newspaper *Ninnau* where she writes the genealogical column 'Climbing the Family Tree'. She is also a columnist for the Welsh-American Genealogical Society and editor of the newsletter of the Welsh Study Group of the British Isles. In her seminar Annie will discuss the Welsh settlements in Canada and the USA and the kinds of records that will help a researcher to find an ancestor.

Fr22 Images of Wales: Tradition and Innovation

William Brown and David Greenslade in dialogue will take a fresh look at Wales and the Welsh imagination ranging from druids to dragons, from leeks to love spoons, no traditional image will go unexamined. Artist William Brown, born in Toronto has had many of his pictures exhibited in many international collections in Wales, London and continental Europe. The author David Greenslade was born in Wales but lived for many years in the USA. His first book 'Welsh Fever' was a detailed study of Welsh life in the USA and Canada. Their talk will share what they experienced when they joined visual and literary skills in order to re-imagine Wales.

Fr23 Changes in Wales since the 1930s

Nathan Hughes, author of 'Reminiscences of Wales 1924-1942' and native of Penygroes, Carmarthenshire has returned to the land of his birth at regular intervals. His talk will compare life in Wales over the last half century and more in relation to language, religion, village life, education and sport.

Fr24 The Top Ten Reasons to Take Your Vacation in Wales.

Up to date information in a presentation that will inspire you to visit Wales from Raymond Mathias of the Welsh Tourist Board.

Fr25 Ysgol Gân Sopranos and Altos. Practice and learn your parts for the Sunday Gymanfa Ganu with Roy Morris the conductor.

Friday Afternoon 1:30-2:30

Fr31 Slate Quarries and Quarry Villages in North Wales, New York and Vermont, 1850-1920 Gwilym R. Roberts, author of 'New Lives

in the Valley' gives a picture of the social history of the slate quarries in North Wales, Vermont and New York and the background to the Welsh entrepreneurs and slate miners at the peak of the Welsh-American Communities in the US and Canada.

Fr32 The Golden Age of the Welsh Saints by the Right Reverend J. Ivor Rees. The former bishop of St. David's in Wales will talk about the remarkable period in Wales and the other Celtic countries which saw the flowering of Celtic spirituality and produced such saints as St. Teilo, St Beuno and St David in particular. This will be an excellent introduction for those interested in early Christianity in Wales.

Fr33 W. Randolph Hearst's Other Castle: The Remarkable Story of St. Donat's Castle in the Vale of Glamorgan.

The American newspaper magnate W.R Hearst bought St Donat's in 1925. He converted it into a luxurious 'living museum'. Enfys McMurry, the author of 'Hearst's Other Castle', and who is from Llwynypia, will give a presentation with slides covering Hearst himself, Marion Davies his companion, the castle before and after its conversions, not to mention its legends and its ghosts. A footnote: while at St Donat's, Hearst was accorded the only interview with Edward the VIII just before he abdicated.

Fr34 Pronouncing the Words of Welsh Hymns.

Hefina Philips, well-known as a proficient and experienced teacher of Welsh in both the USA and Canada will be guiding those who are attending the Gymanfa through the intricacies of Welsh pronunciation that will help those singing the hymns in Welsh. Hefina will also be sprinkling her talk with anecdotes about the writers of the hymns such as William Williams Pantycelyn and the mystic Ann Griffiths.

Friday Afternoon 3:00-4:00

Fr 41 Shwd ych chi heddiw?--An Introduction to Spoken Welsh.

Ever wanted to take the first steps towards learning Welsh? Here is your chance, you have no way of knowing where it will lead. Kara Lewis from mid-Wales is presently teaching at the Madog Center for Welsh Studies at the University of Rio Grande. She will be giving an introductory lesson as well as information about finding Welsh courses in North America. This is a seminar for people who are just starting out with the Welsh language.

Fr42 Business Opportunities in Wales by David Williams and Jennifer Poston. A discussion and information session co-chaired by David Williams the President of Welsh North American Chamber of Commerce and Jennifer Poston the Ottawa representative of the Welsh Development

Fr43 Please see FR12

Fr44 Please see FR15

Saturday Morning 11:00-12:00

Sa21 Please see FR22

Sa22 Please see Fr14

Sa23 Please see Fr23

Sa24 Please see Fr34

Sa25 Ysgol Gân Tenors & Bass. Practice and learn your parts to the hymns for the Sunday Gymanfa Ganu with conductor Roy Morris.

Saturday Afternoon 1:30-2:30

Sa31 Please see Fr11

Sa32 Please see Fr31

Sa33 Please see Fr13

Sa34 Please see Fr41

Saturday Afternoon 3:00-4:00

Sa41 Please see Fr32

Sa42 Please see Fr21

Sa43 Please see Fr 33

Sa44 Please see Fr24

As you can see we have a busy weekend of Welsh Activities planned with something to interest everyone. We hope that you will come and visit our beautiful city and celebrate the first Welsh National Gymanfa Ganu of North America of the new millennium.

Pob Hwyl
Ian Morris
Venue Chairman, Ottawa 2000 Gymanfa Ganu

69th Welsh National Gymanfa Ganu Sightseeing Program

**4
GREAT
OPTIONS**

Registration Deadline: Aug. 1, 2000

Royalty, Politics & History City Tour

A Full Day of FUN!

Climb aboard the red double decker bus as we set off for a tour of Rideau Hall, the residence of Canada's Governor General. This 170-room mansion, set on 88 acres of green space is a national treasure.

A tour of Canada's Parliament Buildings and a 3-course lunch follow.

After lunch, we stop at Canada's history museum for a tour of the world-renowned Canadian Museum of Civilization. Soaring totem poles and life-sized recreations of Canadian history await!

**Plus:
3-course lunch
at beautiful
heritage
restaurant**

**\$47 CAN
\$35 US
Taxes
included**

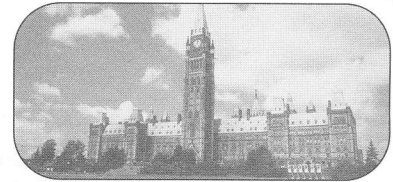
**Includes a guided tour of the
Governor General's Residence, Parliament
Building, and Museum of Civilization.**

Tour #	Date & Time
TH-1	Thursday, August 31, 2000 08:45 - 16:00
FR 4	Friday, September 1, 2000 08:30 - 16:00

**All tours
depart from the
Ottawa Congress
Centre's main
entrance
(55 Colonel By Dr.)**

**Any Questions:
1-613-841-9297**

GRAND CITY TOUR



See Ottawa from the top of an authentic English double decker bus, as the tour guide shares the history, lore and legends of Canada's Capital.

**\$16 CAN
\$12 US
Taxes
included**

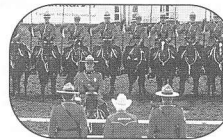
The tour passes by all of Ottawa's major sites, including the Prime Minister's residence, Rideau Canal, and the Canadian Museum of Civilization.

**Includes a guided tour of the
Parliament Building.**

Tour #	Date & Time
FR-2	Friday, September 1, 2000 08:30 - 11:30
FR-3	Friday, September 1, 2000 12:30 - 15:30
SA-1	Saturday, September 2, 2000 13:00 - 16:00

POMP & POLITICS TOUR

**\$19.²⁵ CAN
\$14.⁵⁰ US
Taxes
included**



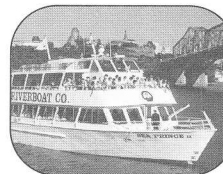
This tour includes the Grand City Tour mentioned above and a visit to the Royal Canadian Mounted Police Stables. Come experience first hand the history of Canada's most recognizable icon - "the Mountie".

**Includes Parliament Building &
RCMP Musical Ride Stable Tours.**

Tour #	Date & Time
TH-3	Thursday, August 31, 2000 13:00 - 16:30
FR-1	Friday, September 1, 2000 08:30 - 12:30
SA-2	Saturday, September 2, 2000 13:00 - 16:30

**\$59.⁹⁵ CAN
\$45 US
Taxes
included**

1 000 ISLAND BOAT CRUISE



Relax aboard the executive motorcoach as we head off to Brockville, the gateway to the Thousand Islands. After a brief city tour we embark on a 3-hour luncheon cruise of the majestic 1000 islands featuring Boldt Castle, beautiful scenery and palatial mansions.

After the narrated tour of the St. Lawrence Seaway we return to Ottawa making a brief stop at a quaint Eastern Ontario craft store.

**Includes: 3-hour boat cruise with
grand buffet lunch**

Tour #	Date & Time
TH-2	Thursday, August 31, 2000 08:45 - 16:30
MO-1	Monday, September 4, 2000 08:45 - 16:30



Welsh National Gymanfa Ganu Eisteddfod Sept. 1st & 2nd 2000, Ottawa, Canada

HOW TO ENTER: Complete the entry form at the bottom of the page and send it to Alison Lawson along with a cheque for the entry fee. The competition is planned for both Friday and Saturday Sept. 1 & 2. The choral and family vocal ensemble to be held Saturday. You will receive confirmation upon receipt of entry form and fee. A schedule and other details will be sent to each contestant before the event.

COMPETITION RULES:

Solo Voice - Entry Fee \$15.00 Can or \$10.00 US

Two contrasting pieces to be sung, at least one of which must be of Welsh Origin. Time allotted for the presentation is eight (8) minutes.

Solo Instrumental - Entry Fee \$15.00 Can or \$10.00 US

Two contrasting pieces to be played. The pieces should have a Welsh Flavour. Time allotted for the presentation is ten (10) minutes

Choral - Entry Fee \$30.00 Can or \$20.00 US

Two contrasting pieces to be sung, at least one of which must be of Welsh Origin. Time allotted for the presentation is twelve (12) minutes.

Family Vocal Ensemble - Entry Fee \$15.00 Can or \$10.00 US

Two contrasting pieces to be sung, at least one of which must be of Welsh Origin. Time allotted for the presentation is eight (8) minutes.

ALL ENTRIES MUST BE RECEIVED BY JUNE 30TH, 2000 ALONG WITH ALL MUSIC

Completed entries must include the following: entry form, entry fee and two copies of music to be performed. If accompanist is needed, three copies must be submitted.

ENTRANCE FEE WILL NOT BE REFUNDED FOR CANCELLATIONS AFTER JUNE 30TH, 2000

2000 Eisteddfod Entry Form

Name _____

Address _____

Telephone (____) _____

Please return completed entry form to:
Mrs. Alison Lawson, Ottawa 2000 Gymanfa Ganu
[REDACTED]
Orleans, Ontario
K1E 3W4

Make cheque payable to:
Ottawa 2000 Gymanfa Ganu
Or include on registration form

CATEGORY: All Categories will have separate judging for Amateurs and Professionals

Amateur Professional

Solo Voice: Adult Youth (13-17)
 Soprano Alto Tenor Bass Need Accompanist

Instrumental: (Specify Instrument) _____
 Adult Youth (13-17) Need Accompanist

Choral: (Specify name of group; register under contact person name) _____
 Male Female Mixed Adult Youth (17 & under)

Family Vocal Ensemble: No. of Adults ____ No. of Children ____ Need Accompanist

(Please list names and ages of children) _____

Literary Contest

HOW TO ENTER: Complete the literary entry form and send it to Dr. Paul Birt along with a cheque for the entry fee. The competition is planned for both Friday and Saturday Sept. 1 & 2. Details of judging will be forwarded to each entrant before the event. Entry fee is \$15.00 Can or \$11.50 US per entry.

COMPETITION RULES: There will be 4 separate categories in the Literary part of the Eisteddfod. We will be judging Poetry and Prose in English and Welsh. For the prose competitions the limit is 1000 words. I'r gystadlaethau rhyddiaeth, cyfyngir i 1000 o eiriau. For the poetry competitions the limit is 50 lines. I'r gystadlaethau barddoniaeth, cyfyngir i 50 o linellau.

2000 Literary Eisteddfod Entry Form

Name _____

Address _____

Telephone (____) _____

Poetry/Barddoniaeth: English Title/Teitl: 'Hiraeth'
Welsh Title/Teitl: 'Fy Nghymru i'

Prose/Rhyddiaith English Title/Teitl: 'Growing up Welsh in North America'
Welsh Title/Teitl: 'Iaith y Nefoedd'

Please return complete entry form to:
Dr. Paul Birt, Ottawa 2000 Gymanfa Ganu

Orleans, Ontario
K1E 3W4

Make cheque payable to:
Ottawa 2000 Gymanfa Ganu
or include on registration form

All entries must be received by July 1st, 2000

Senior Hymn Singing Competition

HOW TO ENTER: Complete the entry form at the bottom of the page and send it to Alison Lawson along with a cheque for the entry fee of \$10.00 Can or \$7.50 US. You will receive confirmation upon receipt of entry form and fee. A schedule and other details will be sent to each contestant before the event.

performed with time allotted of 4 minutes.

Name _____

Address _____

Telephone (____) _____

Need Accompanist _____

Please return completed entry form to:
Mrs Alison Lawson, Ottawa 2000 Gymanfa Ganu

Orleans, Ontario
K1E 3W4

Make cheque payable to:
Ottawa 2000 Gymanfa Ganu
or include on registration form

Contestants needing an accompanist must send one copy of music to Alison Lawson by July 31, 2000. A confirmation will be sent upon receipt of these items.

This form may be reproduced as needed for additional registrants